

### DATA SUMMARY

Last Close	\$126.67	Trade Date	05/21/21	Avg Volume	7.58 M
One Yr Forecast	3.11%	Momentum	20.88%	Sharpe Ratio	0.66
Volatility	28.17%	52-Week High	\$174.79	Ann Dividend	\$0.32
Beta	1.20	52-Week Low	\$97.15	Dividend Yield	0.25%

### VALUENGINE RECOMMENDATION

NEGATIVE underperform	NEUTRAL match	POSITIVE outperform
--------------------------	------------------	------------------------

**ValuEngine Rating** 

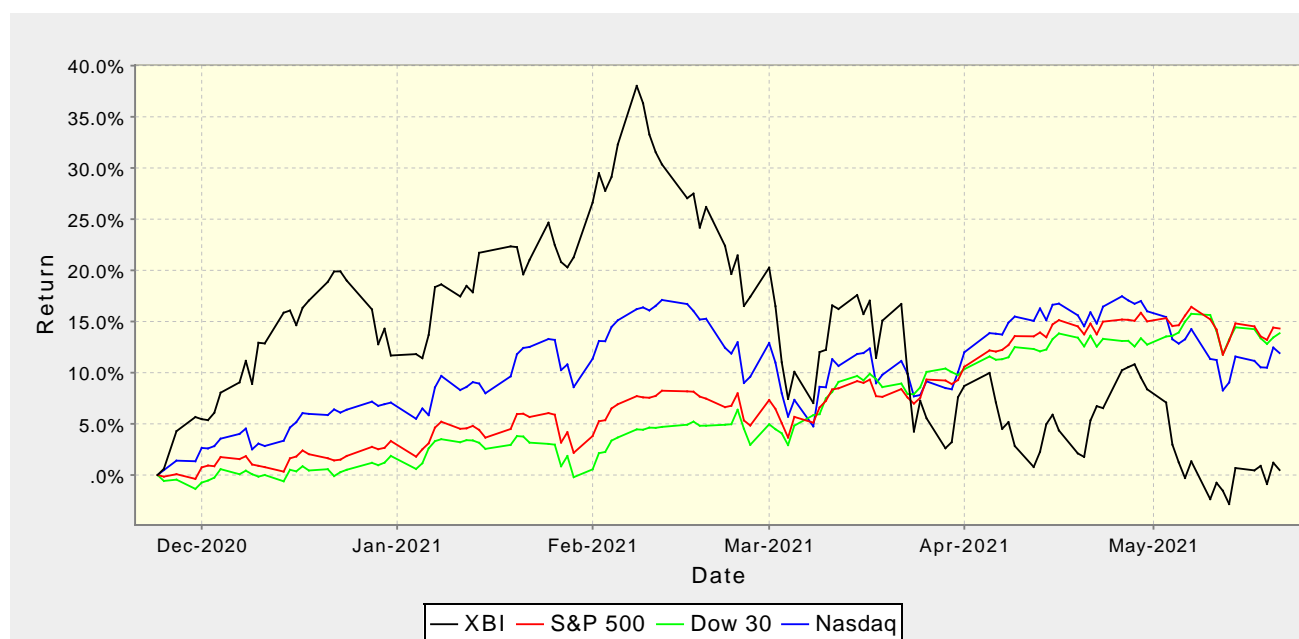
The ValuEngine recommendation is available for over 5000 individual stocks. These recommendations are based on the proprietary ValuEngine one-year forecast return projections for each individual equity. These individual stock recommendations are applied to each holding of the ETF. ValuEngine's Strong Buy stocks have an average annual return of 14.44% since 2002.

### FORECAST ANALYSIS

	Target Price	Exp. Return
1-Month	\$127.01	0.27%
3-Month	\$128.43	1.39%
6-Month	\$130.15	2.75%
1-Year	\$130.61	3.11%
2-Year	\$138.22	9.12%
3-Year	\$134.90	6.50%

The predictive variables used in ValuEngine's forecast model include both proprietary and well-established variables derived from credible financial studies and publications. We use a distinct forecasting model for six different time horizons across each individual holding of the ETF. The most advanced statistical/econometric techniques are also applied to ensure that the return forecasts are as reliable as possible. Click [HERE](#) for more information on ValuEngine's models and research.

### PERFORMANCE COMPARISON



### CONTACT VALUENGINE

[ValuEngine Inc.](#)

PO Box 399, Melbourne, FL 32902, U.S.A.

(321) 325-0519, [support@valuengine.com](mailto:support@valuengine.com), [www.ValuEngine.com](http://www.ValuEngine.com)